

EDGESTONE DIVING BASE:



Part # 7700

FEATURES:

- Durable, Rugged, & Light Weight Polyurea Construction
- Emulates the Look of Hand-Laid Stacked Stone
- *aquaBoard™* Compatible Base
- Weight Limit = 250 lbs.
- Available for Use With 6' Length Boards
- 2 Hole Drill Pattern
- Available in 2 Colors; Hues May Vary
- Color is Chemically Bonded to Undercoat

Standard Board = Duro-Beam 6'
 Upgrade 1 = Techni-Beam 6'
 Upgrade 2 = Olympian 6'

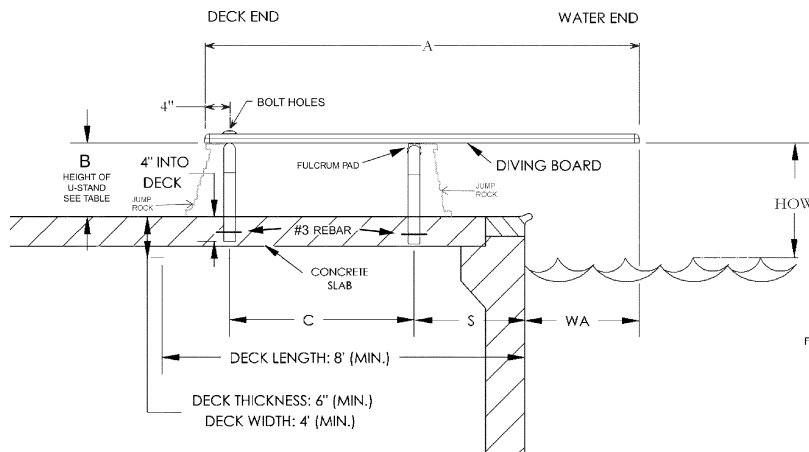
Optional Waterfalls:

Board Fall (basic);
 Board Fall-F (fiber optic);
 Board Fall-L (LED)

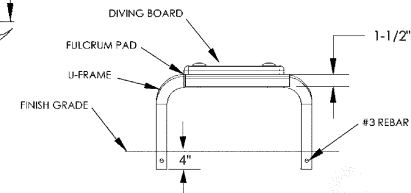
Custom Diving Board Colors:

Black: -2; Tan: -7; Gray: -9
(add custom color code behind part # when ordering)

Edgestone Rock Colors = Graystone: -33; Brownstone: -34
(add custom color code behind part # when ordering)



U-Stand sets 4" into the deck.



A	B	C
6'	12"	30"

U-STANDARDS PART #	NOMINAL BOARD LENGTH (A)	ANSI/NSPI-5 POOL TYPE	DISTANCE FROM POOL EDGE TO FORWARD U-STAND (S)	DISTANCE FROM END OF BOARD TO FORWARD U-STAND	MIN. OVERHANG PLUS OR MINUS 3" WA*	MAX HEIGHT OF BOARD ABOVE WATER HOW
DBU12049	6'	I	18"	36.25"	18"	20"
DBU12049	6'	II	18"	36.25"	18"	20"
DBU12049	6'	III	22"	36.25"	24"	26"
DBU12049	6'	IV	Won't work with rock	NA	NA	NA
DBU12049	6'	V	Won't work with rock	NA	NA	NA

IMPORTANT: THESE DIMENSIONS ARE ACCURATE ONLY FOR VERTICAL POOL WALLS, **TYPICALLY GUNITE CONSTRUCTION**, WITH LESS THAN A 3' RADIUS TO THE POOL FLOOR. DUE TO THE VARYING SIZES OF OTHER POOLS, **TYPICALLY VINYL LINER CONSTRUCTION**, PLEASE CONTACT CUSTOMER SERVICE FOR PROPER JIG PLACEMENT.

1-800-737-5386